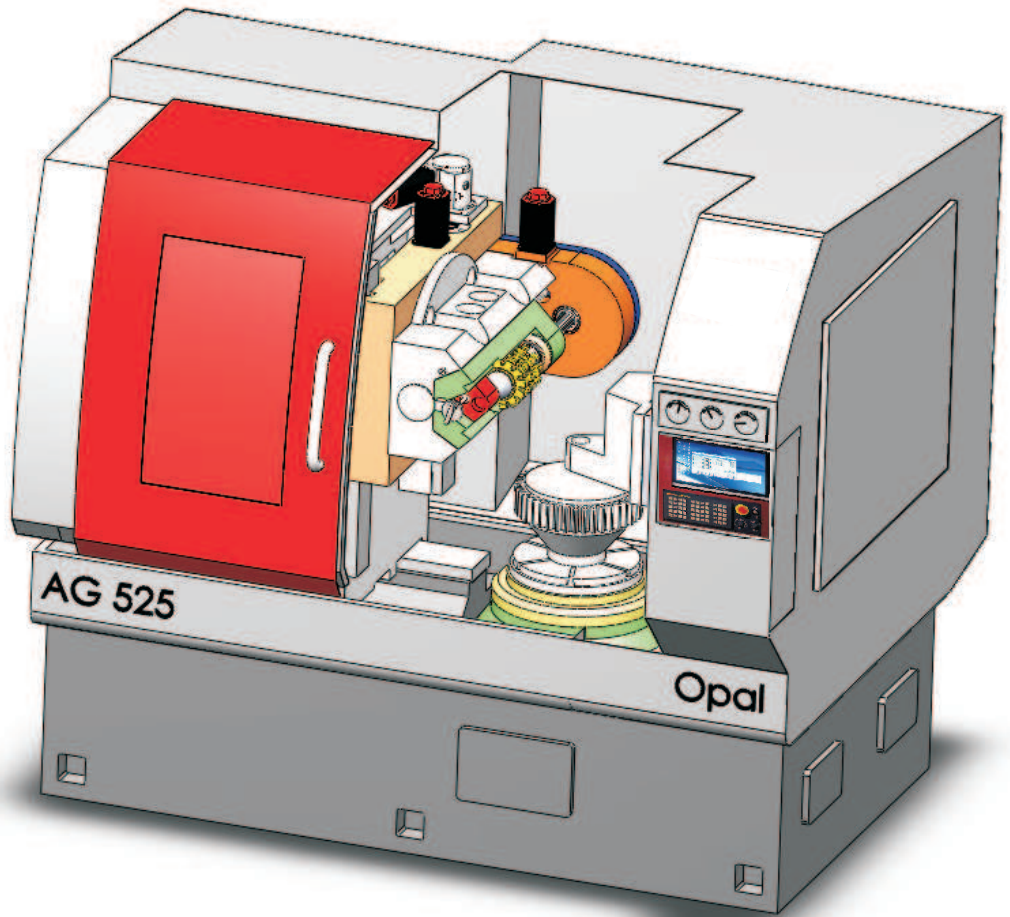


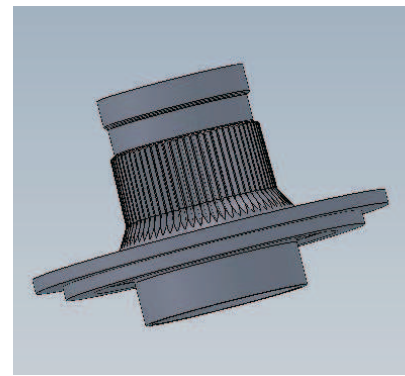
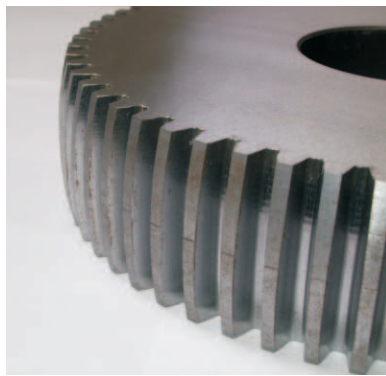
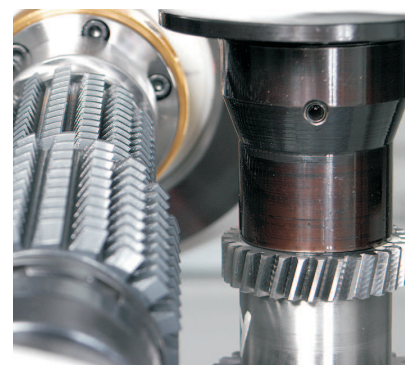
**AMT**

(MACHINE TOOL DIVISION)



**CNC GHB**

**AG 525/900**



**CNC  
GEAR HOBGING  
MACHINE**

**Opal**



## TECHNICAL SPECIFICATIONS OF AG525/900 CNC GEAR HOBBING MACHINE

DESCRIPTION		AG525	AG525 SP-H	AG900	Accessories	Std	Optional
Max workpiece dia	mm	525	525	900	<b>Peripheral</b>		
Max module in steel(UTS 700 Mpa)		14	14	16	*Chip conveyor	■	
Max vertical slide travel	mm	400	400	600	*Oil mist extractor		■
Table dia	mm	525	525	900	*15 inch colour screen flat monitor	■	
Centre distance between hob and workpiece axes, max/min	mm	420/55	420/55	605/55	*Levelling blocks	■	
Distance of hob axis from table surface max/min	mm	600/200	600/200	750/150	*Dry cutting capability	■	
Max hob dia	mm	210	210	210	*Coolant equipment	■	
Max hob length	mm	250	250	250	*Cabinet cooler	■	
Hob head swivel angle	deg	30	30	30	<b>Workpiece handling</b>		
Hob spindle locating dia for hob arbor	ISO	40	40	50	*Steady column with tail stock	■	
Max hob shift	mm	240	50	240	*Hydraulic work clamping unit	■	
Hob spindle speed (inf variable)	rpm	30-500	30-500	30-500	*Steady rest for long workpieces		■
Rapid traverse, axial	m/min	5	5	4	*Deburring attachment		■
Rapid traverse, radial	m/min	5	5	4	<b>Tool holding</b>		
Rapid traverse, tangential	m/min	4	4	3	*Hob Spindle with ISO 50 Taper	■	
Max driving power, hob spindle	kW	18.5	18.5	22	*Hob arbor dia 32	■	
Max torque, hob spindle	Nm	625	625	750	*Hob arbors dia 22,27,40,50,60		■
Max driving power, work spindle	kW	12.6	12.6	12.7	<b>Automation/Fixtures</b>		
Max torque, work spindle	Nm	480	480	600	*High speed loader with integral chain conveyor for workpiece dia upto 150mm		■
Total connected load	kVA	45	45	50	*Ring magazine with workpiece 15-20 workpiece pockets		■
Weight of the machine, approx	kg	9000	9000	10000	*Workpiece clamping fixtures for bore type/shaft type components		■
					<b>Special software/Hardware</b>		
<b>Special Features</b>					*Hobbing 2 gears in single setup		■
*Fanuc CNC control 18 MB with flexible synchronous control (FSC)					*Tapered/crown hobbing		■
*Fanuc direct drives for work spindle					*Diagonal hobbing		■
*Fanuc AC Spindle Motor oil series					*Tooth by tooth milling		■
*Swing type Tail stock for Workpiece loading with Crane					*DNC interface		■
*17 inch colour screen flat monitor					*15 inch colour touch screen flat monitor		■
					<b>Safety device</b>		
					*Instant column retraction in case of power failure	■	

### AEROMECH TECHNOLOGIES PVT LTD

(Machine Tools Division)

# 362, 10th Cross, 4th Phase, Peenya Industrial Area  
Bangalore - 560 058. India.

Telefax : +91 80 28363051

Email: sales@amtech.in      www.amtech.in

## AG 525/900

# CNC GEAR HOBBING MACHINE

# Opal

AMT (MACHINE TOOL DIVISION)

# AMT

